



GREENWAYS

WALTON ON THE HILL

1 GREENWAYS

WALTON ON THE HILL, KT20 7QE



3 RECEPTION ROOMS



KITCHEN BREAKFAST ROOM & LAUNDRY ROOM



4 BEDROOMS



BATHROOM & SHOWER ROOM

APPROX 2272.02 SQ FT | 211.08 M²

Enjoying a quiet cul de sac location a contemporary 1970's built family home occupying a good size corner plot with a secluded south facing rear garden.

The property features light & spacious very well presented accommodation comprising a large welcoming entrance hall, a bright triple aspect lounge, dining room, study, a modern kitchen breakfast room, laundry room and a ground floor cloakroom. On the first floor a large landing with picture window gives access to four bedrooms, an en-suite bathroom, family shower room and large walk in eaves storage area.

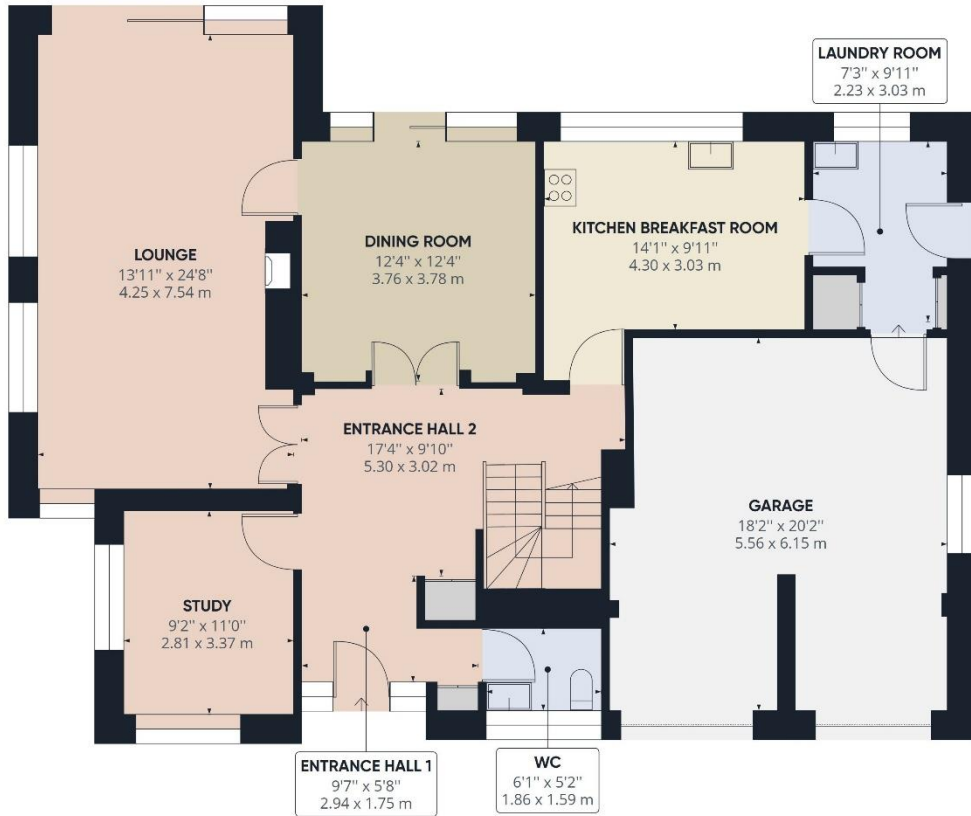
Outside, there is an in and out drive to the front providing parking for several cars, an integral double garage and access to a lovely mature rear garden with a full width terrace and a further sun terrace to the side.

Greenways is located off Heath Drive, a private road located a ten minute walk from the village centre and just a short stroll from the open spaces of Walton Heath and the golf club.

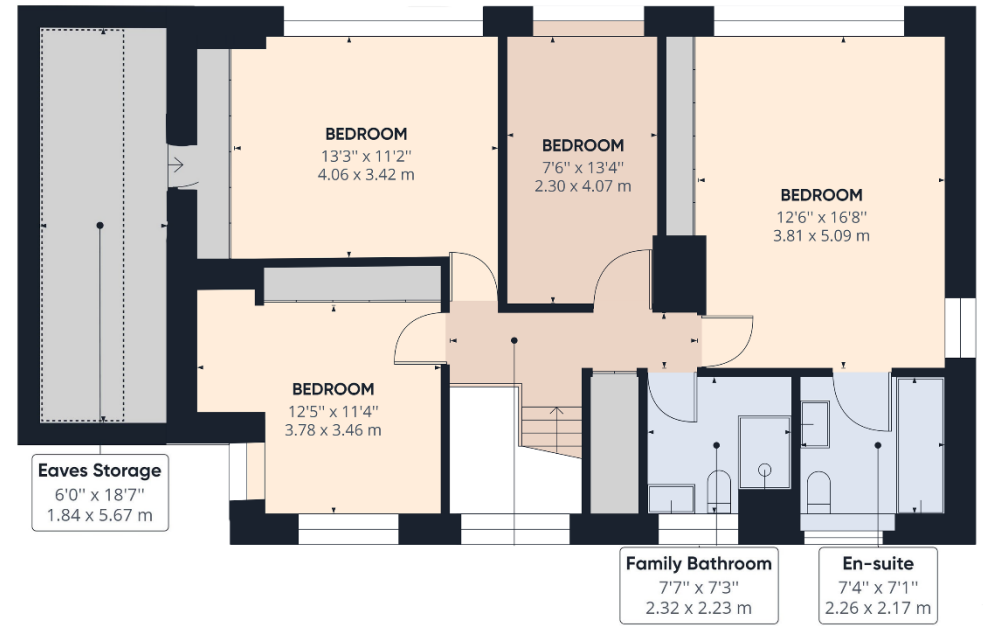
GUIDE PRICE: **£1,250,000**

Council Tax Band G EPC Rating





Ground Floor





WALTON ON THE HILL 61 Walton Street, Walton-on-the-Hill, Surrey KT20 7RZ
01737 814877

IMPORTANT We would inform prospective purchasers that these sales particulars have been prepared as a general guide only. A detailed survey has not been carried out, nor the services, appliances and fittings tested. Room sizes should not be relied upon for furnishing purposes and are approximate. If floor plans are included, they are for guidance only and illustration purposes only and may not be to scale. If there are any important matters likely to affect your decision to buy, please contact us before viewing the property.



michael-everett.co.uk